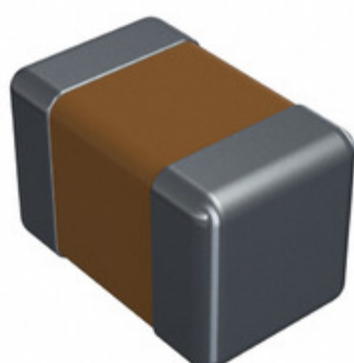


CDR01BP220BKZRAT



Part Number: [CDR01BP220BKZRAT](#)
Manufacturer: [Electro-Films \(EFI\) / Vishay](#)
Description: CAP CER 22PF 100V 10% BP 0805
Data sheet: [PDF CDR Series \(MIL-PRF-55681\)](#)

RoHS Status: Contains lead / RoHS non-compliant
Ship From: Hong Kong
Shipment Way: DHL/Fedex/TNT/UPS/EMS

Images are for reference only.
 See Product Specifications for product details.
 Buy CDR01BP220BKZRAT with confidence from
 Component-World.HK, 1 Year Warranty

[Request For Quotation](#)

PRODUCT PARAMETER

Part Number	CDR01BP220BKZRAT	Manufacturer	Electro-Films (EFI) / Vishay
Description	CAP CER 22PF 100V 10% BP 0805	Lead Free Status / RoHS Status	Contains lead / RoHS non-compliant
Quantity Available	186686 pcs	Data sheet	CDR Series (MIL-PRF-55681)
Category	Capacitors	Voltage - Rated	100V
Tolerance	±10%	Thickness (Max)	0.055" (1.40mm)
Temperature Coefficient	BP	Size / Dimension	0.080" L x 0.050" W (2.03mm x 1.27mm)
Series	Military, MIL-PRF-55681, CDR01	Ratings	-
Packaging	Tape & Reel (TR)	Package / Case	0805 (2012 Metric)
Other Names	CDR01BP220BKZRAT-MIL	Operating Temperature	-55°C ~ 125°C
Mounting Type	Surface Mount, MLCC	Moisture Sensitivity Level (MSL)	1 (Unlimited)
Manufacturer Standard Lead Time	32 Weeks	Lead Style	-
Lead Spacing	-	Lead Free Status / RoHS Status	Contains lead / RoHS non-compliant
Height - Seated (Max)	-	Features	-
Failure Rate	R (0.01%)	Detailed Description	22pF ±10% 100V Ceramic Capacitor BP 0805 (2012 Metric)
Capacitance	22pF	Applications	General Purpose

Component-World.com is a Reliable Stocking Distributor of Electronic Components. We specialize in all Electro-Films (EFI) / Vishay series electronic components. We have 186686 pieces of Electro-Films (EFI) / Vishay CDR01BP220BKZRAT in stock available now. Request a quote from electronics components distributor at Component-World.com, our sales team will contact you within 24 hours.
 RFQ Email: info@Components-World.com

RELATED PRODUCTS

	Part#: CDR01BP270BJURAB Description: CAP CER 27PF 100V BP 0805	Manufacturers: Electro-Films (EFI) / Vishay	RFQ
	Part#: CDR01BP270BJUSAJ Description: CAP CER 27PF 100V BP 0805	Manufacturers: Electro-Films (EFI) / Vishay	RFQ
	Part#: CDR01BP270BJUSAB Description: CAP CER 27PF 100V BP 0805	Manufacturers: Electro-Films (EFI) / Vishay	RFQ
	Part#: CDR01BP220BKWSAT Description: CAP CER 22PF 100V BP 0805	Manufacturers: Electro-Films (EFI) / Vishay	RFQ
	Part#: CDR01BP220BKYSAB Description: CAP CER 22PF 100V BP 0805	Manufacturers: Electro-Films (EFI) / Vishay	RFQ
	Part#: CDR01BP220BKWSAR Description: CAP CER 22PF 100V BP 0805	Manufacturers: Electro-Films (EFI) / Vishay	RFQ
	Part#: CDR01BP270BJWSAJ Description: CAP CER 27PF 100V BP 0805	Manufacturers: Electro-Films (EFI) / Vishay	RFQ
	Part#: CDR01BP220BKUSAJ Description: CAP CER 22PF 100V BP 0805	Manufacturers: Electro-Films (EFI) / Vishay	RFQ
	Part#: CDR01BP270BJWSAB Description: CAP CER 27PF 100V BP 0805	Manufacturers: Electro-Films (EFI) / Vishay	RFQ
	Part#: CDR01BP270BJMRAT Description: CAP CER 27PF 100V BP 0805	Manufacturers: Electro-Films (EFI) / Vishay	RFQ
	Part#: CDR01BP220BKZMAT Description: CAP CER 22PF 100V 10% BP 0805	Manufacturers: Electro-Films (EFI) / Vishay	RFQ
	Part#: CDR01BP220BKRYAB Description: CAP CER 22PF 100V BP 0805	Manufacturers: Electro-Films (EFI) / Vishay	RFQ
	Part#: CDR01BP220BKWSAJ Description: CAP CER 22PF 100V BP 0805	Manufacturers: Electro-Films (EFI) / Vishay	RFQ
	Part#: CDR01BP270BJMRAB Description: CAP CER 27PF 100V BP 0805	Manufacturers: Electro-Films (EFI) / Vishay	RFQ
	Part#: CDR01BP220BKWSAB Description: CAP CER 22PF 100V BP 0805	Manufacturers: Electro-Films (EFI) / Vishay	RFQ
	Part#: CDR01BP270BJWSAR Description: CAP CER 27PF 100V BP 0805	Manufacturers: Electro-Films (EFI) / Vishay	RFQ
	Part#: CDR01BP220BKZSAC Description: CAP CER 22PF 100V BP 0805	Manufacturers: Electro-Films (EFI) / Vishay	RFQ
	Part#: CDR01BP220BKWRAJ Description: CAP CER 22PF 100V BP 0805	Manufacturers: Electro-Films (EFI) / Vishay	RFQ
	Part#: CDR01BP220BKZSAT Description: CAP CER 22PF 100V 10% BP 0805	Manufacturers: Electro-Films (EFI) / Vishay	RFQ
	Part#: CDR01BP220BKZPAT Description: CAP CER 22PF 100V 10% BP 0805	Manufacturers: Electro-Films (EFI) / Vishay	RFQ

Related keywords for CDR01BP220BKZRAT

Electro-Films (EFI) / Vishay CDR01BP220BKZRAT	CDR01BP220BKZRAT distributor	CDR01BP220BKZRAT supplier	CDR01BP220BKZRAT price
CDR01BP220BKZRAT download datasheet	CDR01BP220BKZRAT datasheet	CDR01BP220BKZRAT stock	buy CDR01BP220BKZRAT
Electro-Films (EFI) / Vishay CDR01BP220BKZRAT	Electro-Films (EFI) / Vishay CDR01BP220BKZRAT	Vishay Electro-Films CDR01BP220BKZRAT	Phoenix Passive Components / Vishay CDR01BP220BKZRAT